

CEMTEX UNITY 99,990 DWT Bulk Carrier 44



Contents



By Builder



By Ship Type





CEMTEX UNITY 99,990 DWT Bulk Carrier 44

Oshima Shipbuilding Co., Ltd. delivered CEMTEX UNITY, a 99,990-DWT bulk carrier, U-Ming Marine Transport (Hong Kong) Limited in October 2023.

Features

1. This vessel has an optimized hull form for carrying grain, ore, coal, hot coil and steel plate, and large deadweight (99,990 MT) with shallow draft (14.415m).
2. This vessel has large collecting tank for storage of hold wash water, deck wash water.
3. Advanced Flipper Fins & Rudder Fin which improve propul-

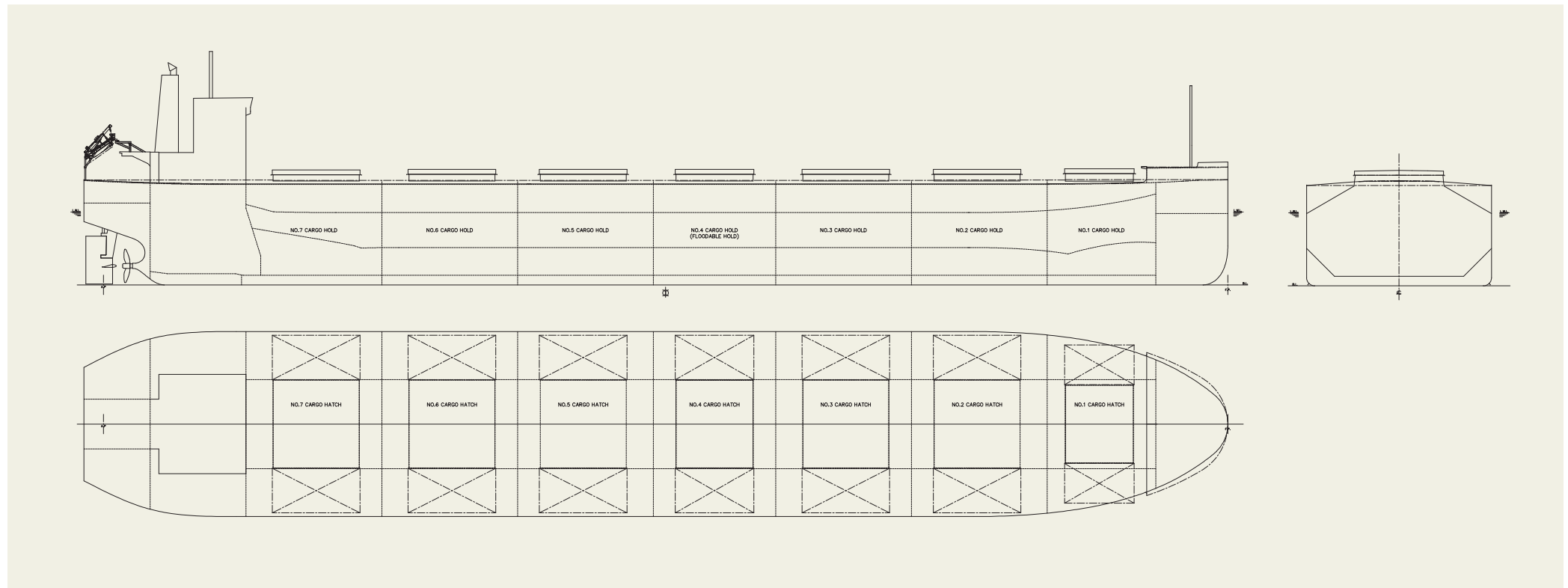
PRINCIPAL PARTICULARS

Length (o.a.).....	235.00 m
Breadth (mld.).....	40.00 m
Depth (mld.).....	20.00 m
Draft (mld.).....	14.415 m
Gross tonnage.....	54,244
Deadweight.....	99,990 MT

Main engine.....	MITSUI-MAN B&W 6G60ME-C10.5
MCR (kw x rpm).....	9,000 kW x 72.0 rpm
Speed (service).....	14.30 knots
Complement.....	25
Classification.....	ABS/CR<NK>
Loading capacity (grain).....	118,908 m ³
Builder.....	Oshima Shipbuilding Co., Ltd.

4. Special bow form, Seaworthy Bow improves speed

performance in rough sea conditions as compared to ordinary bows.



KAWA NAPRANUM 87,396 DWT Bulk Carrier 45



Contents



By Builder



By Ship Type





Contents



By Builder



By Ship Type

KAWA NAPRANUM 87,396 DWT Bulk Carrier 45

Oshima Shipbuilding Co., Ltd. delivered KAWA NAPRANUM, a 87,396-DWT bulk carrier, to LUCRETIA SHIPPING, S.A. in November 2023.

Features

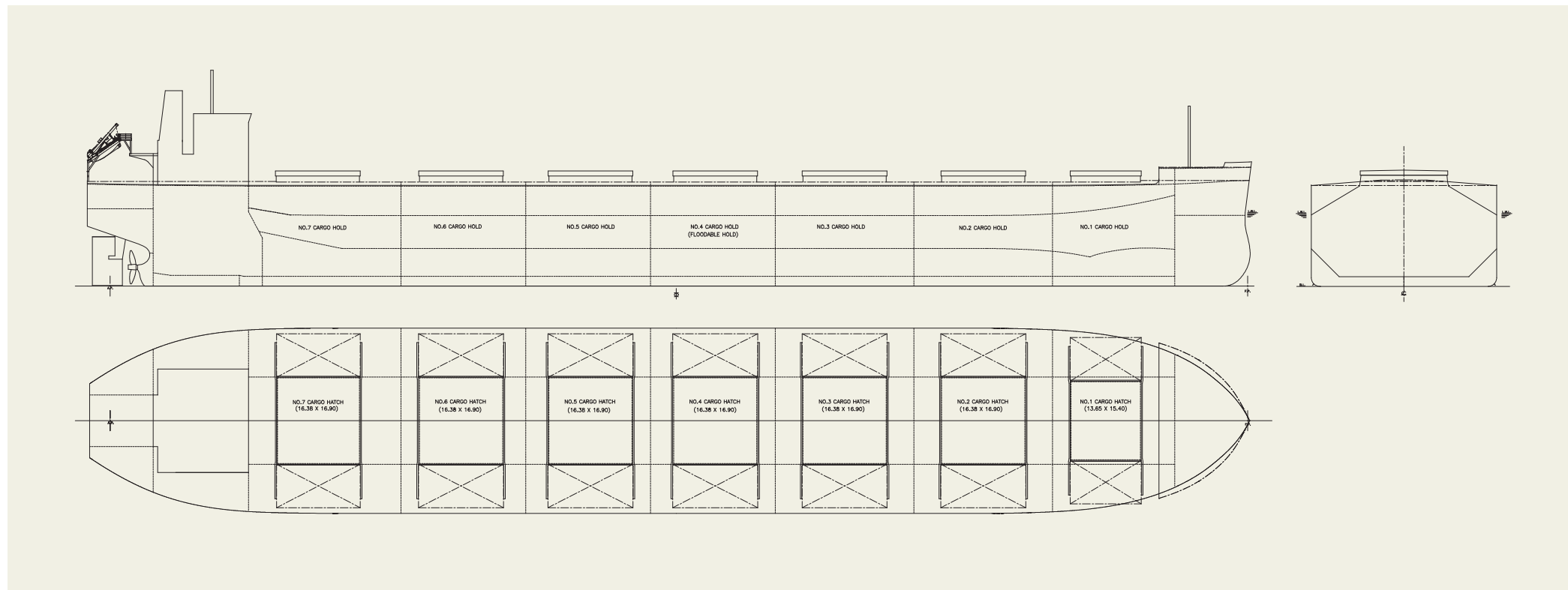
1. This vessel has an optimized hull form for carrying grain, ore, coal, and cement, and large deadweight(87,396 MT) with shallow draft (14.322m)
2. Wide hatch cover improves cargo handling efficiency.
3. Advanced Flipper Fins & Rudder Fin which improve propulsion efficiency are installed.

PRINCIPAL PARTICULARS

Length (o.a.).....	228.41 m
Breadth (mld.).....	36.50 m
Depth (mld.).....	20.39 m
Draft (mld.).....	14.322 m
Gross tonnage.....	48,105
Deadweight.....	87,396 MT

Main engine.....	MITSUI MAN B&W 5S60ME-C10.5-EGRBP
MCR (kw x rpm).....	8,180 kW x 84.0 rpm
Speed (service).....	14.30 knots
Complement.....	25
Classification.....	NK
Loading capacity (grain).....	106,222 m ³
Builder.....	Oshima Shipbuilding Co., Ltd.

4. Special bow form, Seaworthy Bow improves speed performance in rough sea conditions as compared to ordinary bows.



NORD ACE 87,404 DWT Bulk Carrier 46



Contents



By Builder



By Ship Type



NORD ACE 87,404 DWT Bulk Carrier 46

Oshima Shipbuilding Co., Ltd. delivered NORD ACE, a 87,404-DWT bulk carrier, to T.H. CORP., S.A. in September 2024.

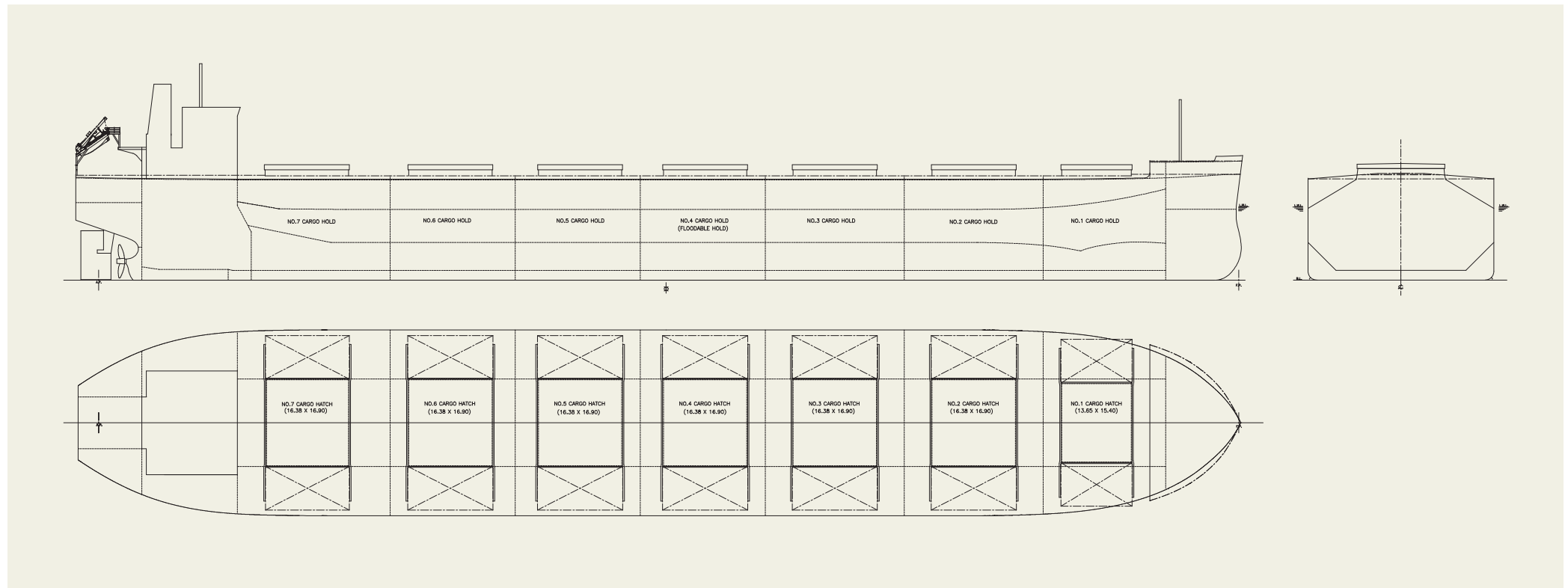
Features

1. This vessel has an optimized hull form for carrying grain, ore, and coal, and large deadweight (87,404 MT) with shallow draft (14.322m)
2. Wide hatch cover improves cargo handling efficiency.
3. Advanced Flipper Fins & Rudder Fin which improve propulsion efficiency are installed.
4. Special bow form, Seaworthy Bow improves speed

PRINCIPAL PARTICULARS

Length (o.a.).....	228.41 m	Main engine.....	MITSUI MAN B&W 5S60ME-C10.5-EGRBP
Breadth (mld.).....	36.50 m	MCR (kw x rpm).....	8,180 kW x 84.0 rpm
Depth (mld.).....	20.39 m	Speed (service).....	14.30 knots
Draft (mld.).....	14.322 m	Complement.....	25
Gross tonnage.....	48,223	Classification.....	NK
Deadweight.....	87,404 MT	Loading capacity (grain).....	106,171 m ³
		Builder.....	Oshima Shipbuilding Co., Ltd.

performance in rough sea conditions as compared to ordinary bows.



SOL EXPLORER 95,552 DWT Bulk Carrier 47



Contents



By Builder



By Ship Type



SOL EXPLORER 95,552 DWT Bulk Carrier 47

Oshima Shipbuilding Co., Ltd. delivered SOL EXPLORER, a 95,552-DWT bulk carrier, to Japan Ship Management Co., Ltd. in June 2024.

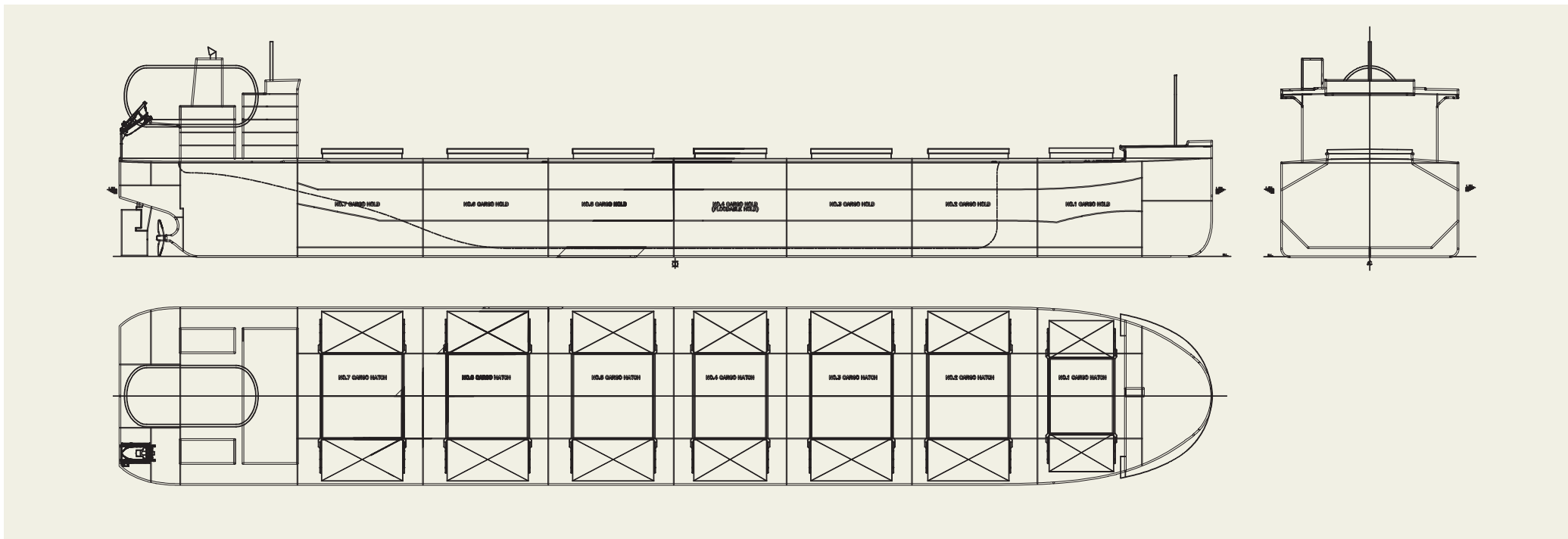
Features

1. This vessel has an optimized hull form for carrying grain, ore, and coal, and large deadweight (95,552 MT) with shallow draft (14.35m).
2. This vessel is equipped with state-of-the-art Fuel Tank and Supply system the vessel also features a unique LNG tank arrangement.
3. The LNG storage tanks are installed on the upper deck, located aft of the accommodation block.

PRINCIPAL PARTICULARS

Length (o.a.).....	234.98 m	Main engine.....	DU WinGD 6X62DF-2.1 with VCR
Breadth (mld.).....	38.00 m	MCR (kw x rpm).....	9,400 kW x 81.0 rpm
Depth (mld.).....	20.16 m	Speed (service).....	13.80 knots
Draft (mld.).....	14.35 m	Complement.....	27
Gross tonnage.....	54,281	Classification.....	NK
Deadweight.....	95,552 MT	Loading capacit (grain).....	109,728 m ³
		(Builder.....)	Oshima Shipbuilding Co., Ltd.

4. By using LNG as its main fuel, the vessel will significantly reduce its environmental impact compared to heavy oil-fueled vessels
5. Advanced Flipper Fins & Rudder Fin which improve propulsion efficiency are installed.
6. Special bow form, Seaworthy Bow improves speed performance in rough sea conditions as compared to ordinary bows.



FIRANDO 82,239 DWT Bulk Carrier 49



Contents



By Builder



By Ship Type





Contents



By Builder



By Ship Type

FIRANDO 82,239 DWT Bulk Carrier 49

Oshima Shipbuilding Co., Ltd. delivered FIRANDO, a 82,239-DWT bulk carrier, to CONCERTO SINGAPORE PTE.LTD., in December 2023.

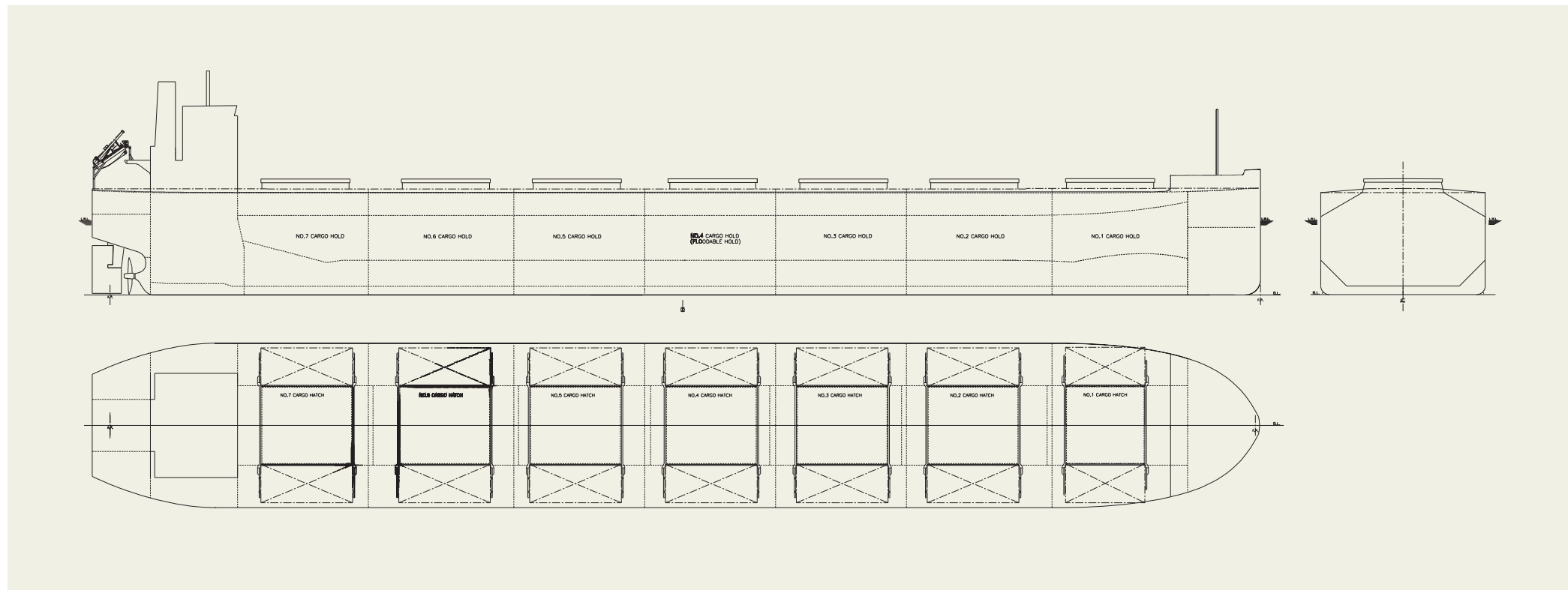
Features

1. This vessel has largest deadweight of Panamax bulkers in the world with shallow draft and Wide hatch cover improves cargo handling efficiency.
2. Advanced Flipper Fins & Rudder Fin which improve propulsion efficiency are installed.
3. Special bow form, Seaworthy Bow improves speed perfor-

PRINCIPAL PARTICULARS

Length (o.a.).....	228.995 m	Main engine.....	MITSUI MAN B&W 5S60ME-C10.5-EGRBP
Breadth (mld.).....	32.26 m	MCR (kw x rpm).....	7,760 kW x 84.0 rpm
Depth (mld.).....	19.98 m	Speed (service).....	14.30 knots
Draft (mld.).....	14.480 m	Complement.....	25
Gross tonnage.....	43,370	Classification.....	NK
Deadweight.....	82,239 MT	Loading capacity (grain).....	97,416 m ³
		Builder.....	Oshima Shipbuilding Co., Ltd.

mance in rough sea conditions as compared to ordinary bows.



KERYNIA 82,114 DWT Bulk Carrier 50



Contents



By Builder



By Ship Type



KERYNIA 82,114 DWT Bulk Carrier 50

Oshima Shipbuilding Co., Ltd. delivered KERYNIA, a 82, 114-DWT bulk carrier, to SHIMASEVEN SHIPPING CORPORATION in January 2024

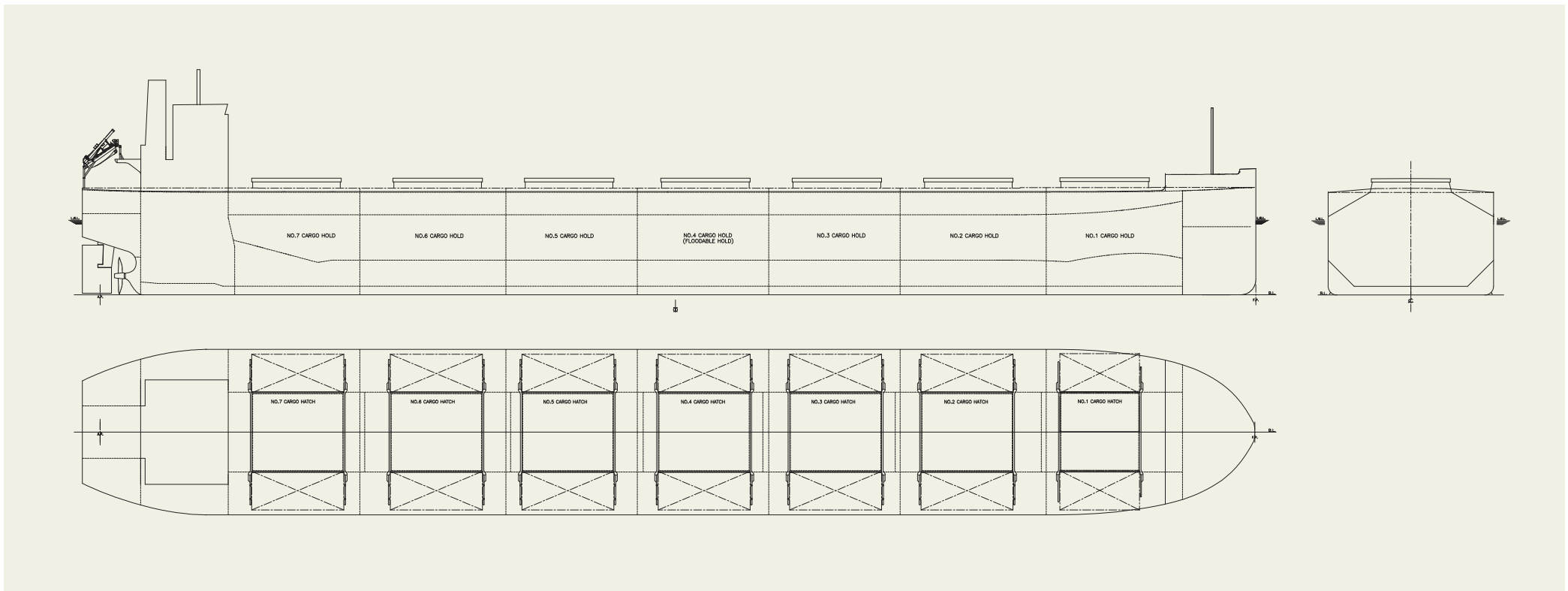
Features

1. This vessel has largest deadweight of Panamax bulkers in the world with shallow draft and Wide hatch cover improves cargo handling efficiency.
2. Advanced Flipper Fins & Rudder Fin which improve propulsion efficiency are installed.
3. Special bow form, Seaworthy Bow improves speed

PRINCIPAL PARTICULARS

Length (o.a.).....	228.995 m	Main engine.....	MITSUI MAN B&W 5S60ME-C10.5-EGRBP
Breadth (mld.).....	32.26 m	MCR (kw x rpm).....	7,760 kW x 84.0 rpm
Depth (mld.).....	19.98 m	peed (service).....	14.30 knots
Draft (mld.).....	14.480 m	Complement.....	25
Gross tonnage.....	43,543	Classification.....	LR
Deadweight.....	82,114 MT	Loading capacity (grain).....	97,416 m ³
		Builder.....	Oshima Shipbuilding Co., Ltd.

performance in rough sea conditions as compared to ordinary bows.



PORT NARA 64,611 DWT Bulk Carrier 53



Contents



By Builder



By Ship Type





Contents



By Builder



By Ship Type

PORT NARA 64,611 DWT Bulk Carrier

53

Oshima Shipbuilding Co., Ltd. delivered PORT NARA, a 64,611-DWT bulk carrier, to GARNET OCEANWAY LIMITED in March 2024.

Features

1. This vessel has an optimized hull form for carrying grain, ore, coal and hot coil and large deadweight (64,611MT) with shallow draft (13.518 m).
2. Wide opening folding type hatch cover and four sets of high performance Jib cranes (30MT) are installed for efficient cargo handling.
3. Advanced Flipper Fins & Rudder Fin which improve

PRINCIPAL PARTICULARS

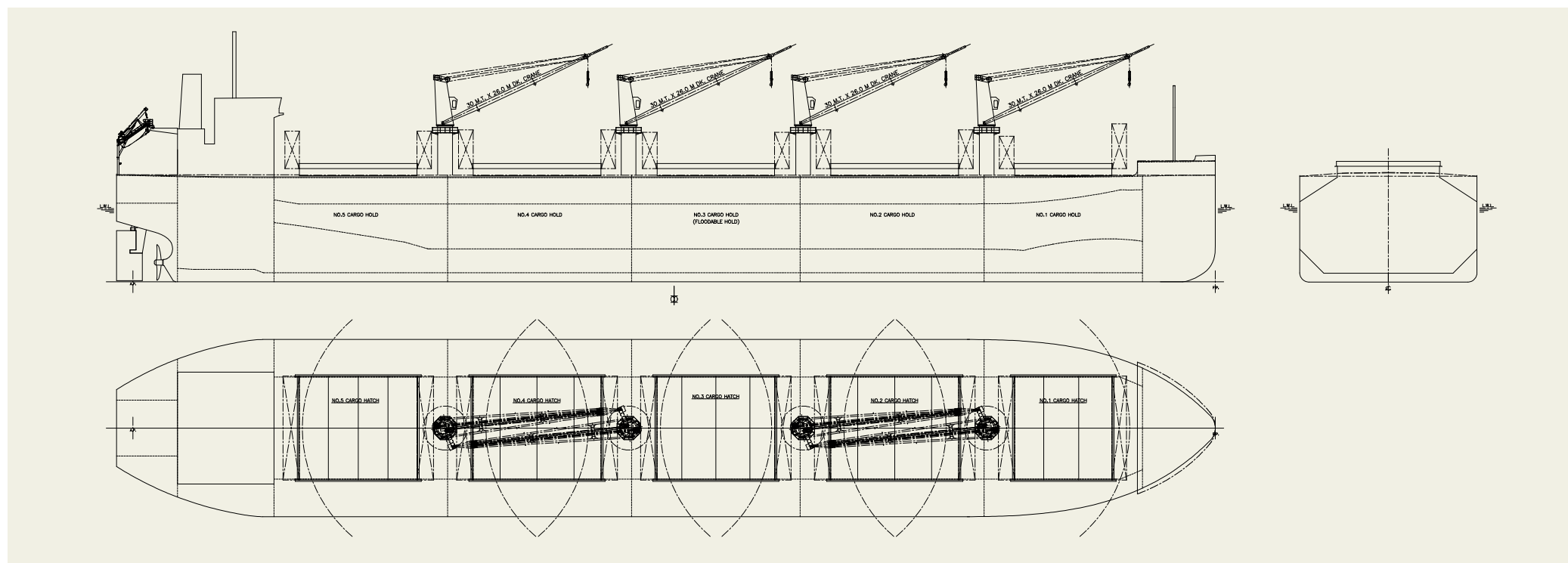
Length (o.a.).....	199.95 m
Breadth (mld.).....	32.26 m
Depth (mld.).....	19.28 m
Draft (mld.).....	13.518 m
Gross tonnage.....	36,091
Deadweight.....	64,611 MT

Main engine.....	J-ENG UE 6UEC50LSH-Eco-C3-EGR
MCR (kw x rpm).....	7,080 kW x 91.0 rpm
Speed (service).....	14.50 knots
Complement.....	25
Classification.....	ABS
Loading capacity (grain).....	81,268 m ³
Builder.....	Oshima Shipbuilding Co., Ltd.

propulsion efficiency are installed.

ordinary bows.

4. Special bow form, Seaworthy Bow improves speed performance in rough sea conditions as compared to



AQUAVITA WEALTH 64,700 DWT Bulk Carrier 54



Contents



By Builder



By Ship Type





Contents



By Builder



By Ship Type

AQUAVITA WEALTH 64,700 DWT Bulk Carrier 54

Oshima Shipbuilding Co., Ltd. delivered AQUAVITA WEALTH, a 64,700-DWT bulk carrier, to WEALTH LINE INC. in March 2024.

Features

1. This vessel has an optimized hull form for carrying grain, ore, coal and hot coil and large deadweight (64,700MT) with shallow draft (13.518 m).
2. Wide opening folding type hatch cover and four sets of high performance Jib cranes (30MT) are installed for efficient cargo handling.
3. Advanced Flipper Fins & Rudder Fin which improve

PRINCIPAL PARTICULARS

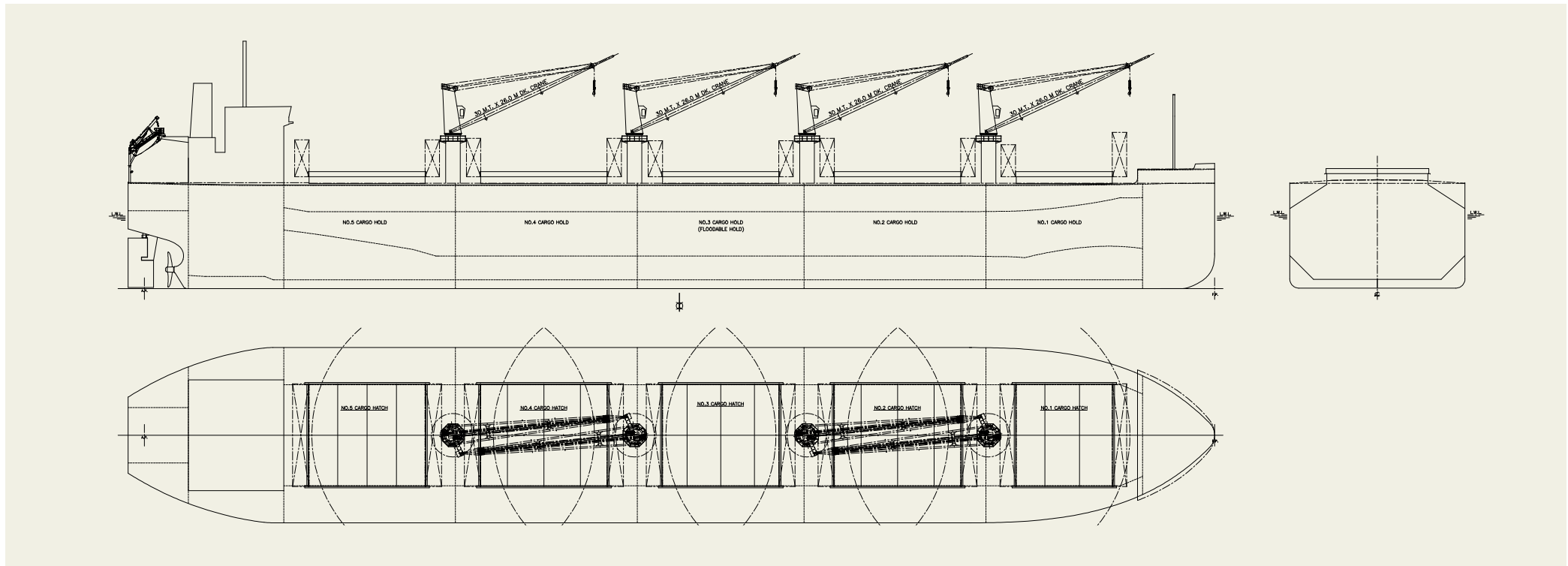
Length (o.a.).....	199.95 m
Breadth (mld.).....	32.26 m
Depth (mld.).....	19.28 m
Draft (mld.).....	13.518 m
Gross tonnage.....	36,157
Deadweight.....	64,700 MT

Main engine.....	MITSUI-MAN B&W 6S50ME-C9.7-EGRBP
MCR (kw x rpm).....	7,080 kW x 91.0 rpm
Speed (service).....	14.50 knots
Complement.....	25
Classification.....	NK
Loading capacity (grain).....	81,268 m ³
Builder.....	Oshima Shipbuilding Co., Ltd.

propulsion efficiency are installed.

ordinary bows.

4. Special bow form, Seaworthy Bow improves speed performance in rough sea conditions as compared to



TAI STEADINESS 64,589 DWT Bulk Carrier 55



Contents



By Builder



By Ship Type





Contents



By Builder



By Ship Type

TAI STEADINESS 64,589 DWT Bulk Carrier 55

Oshima Shipbuilding Co., Ltd. delivered TAI STEADINESS, a 64,589-DWT bulk carrier, to TAI SHING MARITIME CO., S.A. in March 2024.

Features

1. This vessel has an optimized hull form for carrying grain, ore, coal, hot coil, cement, sulphur and salt and large deadweight (64,589MT) with shallow draft (13.518 m).
2. Wide opening folding type hatch cover and four sets of high performance Jib cranes (30MT) are installed for efficient cargo handling.
3. Advanced Flipper Fins & Rudder Fin which improve

PRINCIPAL PARTICULARS

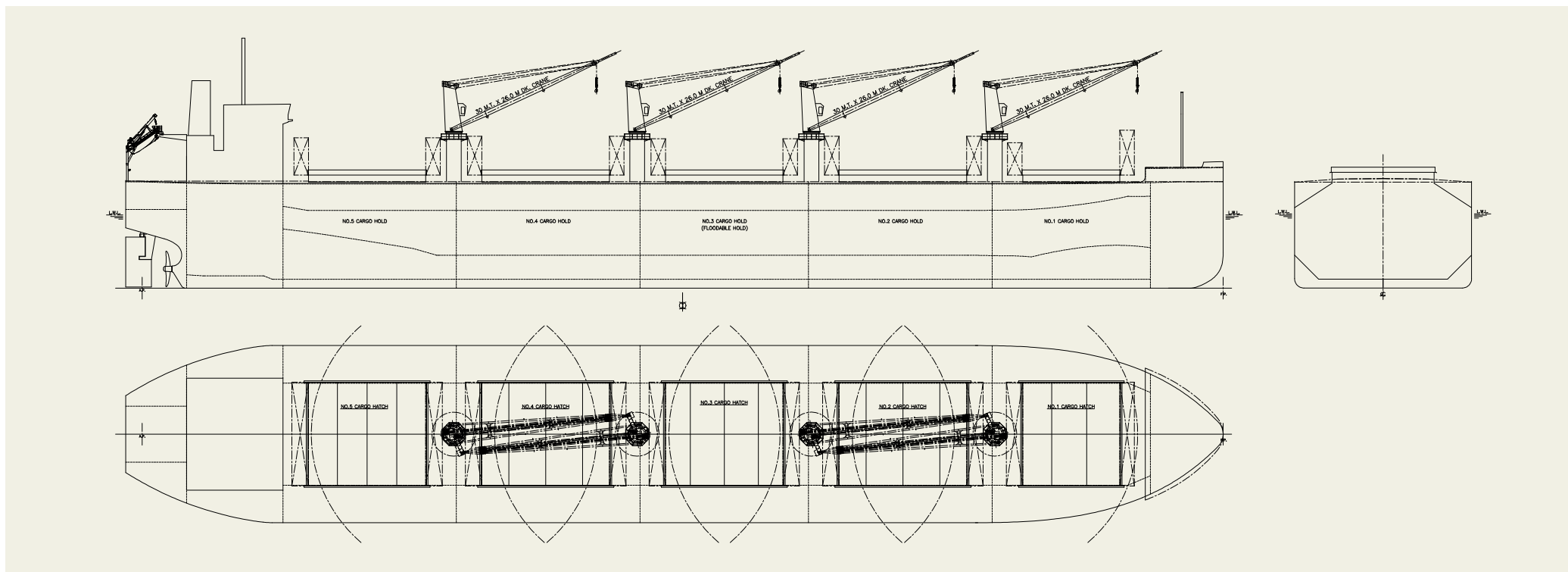
Length (o.a.).....	199.95 m
Breadth (mld.).....	32.26 m
Depth (mld.).....	19.28 m
Draft (mld.).....	13.518 m
Gross tonnage.....	36,090
Deadweight.....	64,589 MT

Main engine.....	MITSUI-MAN B&W 6S50ME-C9.7-EGRBP
MCR (kw x rpm).....	7,080 kW x 91.0 rpm
Speed service).....	14.50 knots
Complement.....	25
Classification.....	LR/CR
Loading capacity (grain).....	81,267 m ³
Builder.....	Oshima Shipbuilding Co., Ltd.

propulsion efficiency are installed.

ordinary bows.

4. Special bow form, Seaworthy Bow improves speed performance in rough sea conditions as compared to



GREEN WINDS 63,896 DWT Bulk Carrier 56



Contents



By Builder



By Ship Type





Contents



By Builder



By Ship Type

GREEN WINDS 63,896 DWT Bulk Carrier 56

Oshima Shipbuilding Co., Ltd. delivered GREEN WINDS, a 63,896-DWT bulk carrier, to DRAGONFLY MARITIME INC. in July 2024.

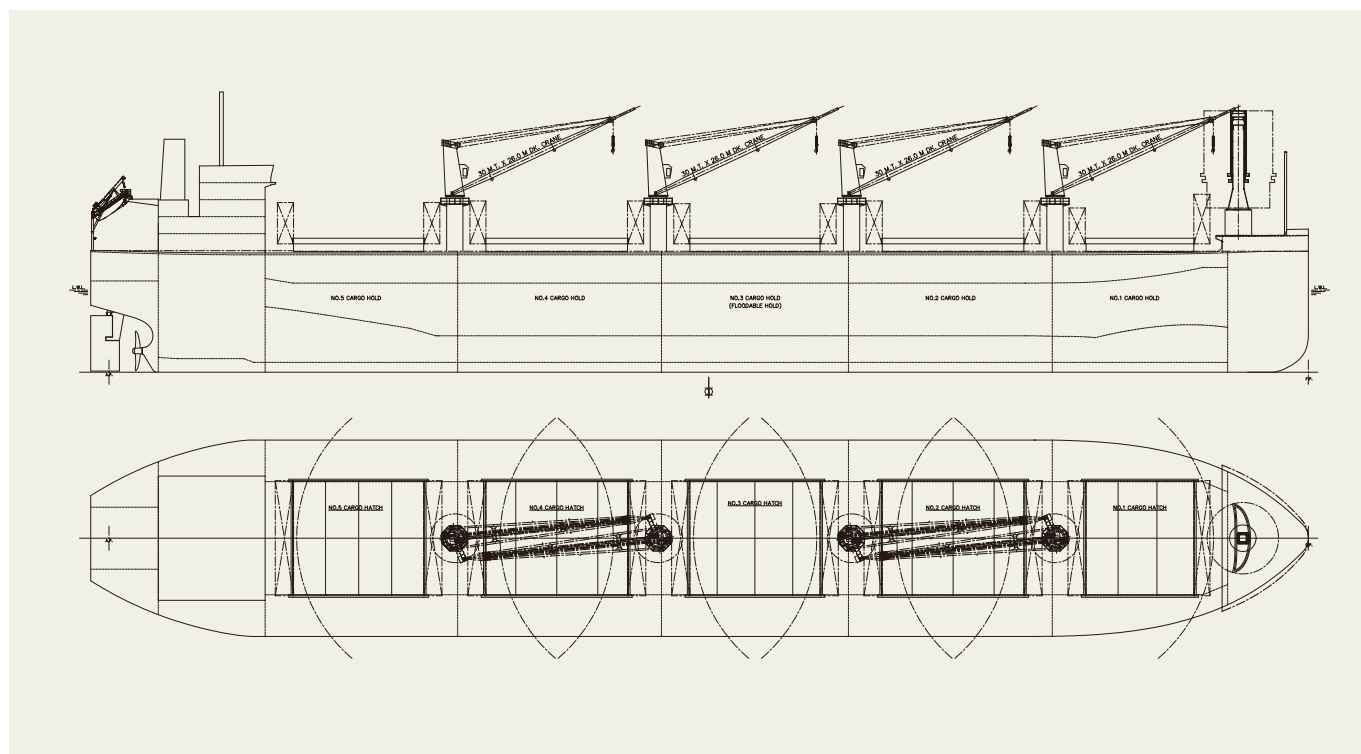
Features

1. This vessel has an optimized hull form for carrying grain, ore, coal and hot coil and large deadweight (63,896MT) with shallow draft (13.518 m).
2. Wide opening folding type hatch cover and four sets of high performance Jib cranes (30MT) are installed for efficient cargo handling.
3. This is the delivered vessel with a rigid sail, so-called "Wind Challenger" which is wind power propulsion system.
4. The rigid sail which consist of two FRP (Fiber Reinforced Plastics) sails and one steel sail is extended and reefed automatically in response to the wind conditions and ship motion.
5. The height of the sail from the main deck is about 39m with all sails fully extended and is about 21m with all sails reefed, and the direction of the sail can rotate 180 degrees.
6. The width of the sail is about 11.4m and complies with SOLAS regulation for visibility from wheel house.
7. By slewing in an appropriate direction, a large amount of wind forces is converted into the propulsive force of the ship and reduce fuel consumption.
8. Advanced Flipper Fins & Rudder Fin which improve propulsion efficiency are installed.
9. Special bow form, Seaworthy Bow improves speed performance in rough sea conditions as compared to ordinary bows.

PRINCIPAL PARTICULARS

Length (o.a.).....	199.95 m
Breadth (mld.).....	32.26 m
Depth (mld.).....	19.28 m
Draft (mld.).....	13.518 m
Gross tonnage.....	36,498
Deadweight.....	63,896 MT

Main engine.....	MITSUI-MAN B&W 6S50ME-C9.7-EGRBP
MCR (kw x rpm).....	7,080 kW x 91.0 rpm
Speed (service).....	14.50 knots
Complement.....	26
Classification.....	NK
Loading capacity (grain).....	81,177 m ³
Builder.....	Oshima Shipbuilding Co., Ltd.



AQUAGRACE 64,678 DWT Bulk Carrier 57



Contents



By Builder



By Ship Type





Contents



By Builder



By Ship Type

AQUAGRACE 64,678 DWT Bulk Carrier 57

Oshima Shipbuilding Co., Ltd. delivered AQUAGRACE, a 64,678-DWT bulk carrier, to CASTLE SHIPMANAGEMENT S.A. in August 2024.

Features

1. This vessel has an optimized hull form for carrying grain, ore, coal and hot coil and large deadweight (64,678MT) with shallow draft (13.518 m).
2. Wide opening folding type hatch cover and four sets of high performance Jib cranes (30MT) are installed for efficient cargo handling.
3. Advanced Flipper Fins & Rudder Fin which improve propul-

PRINCIPAL PARTICULARS

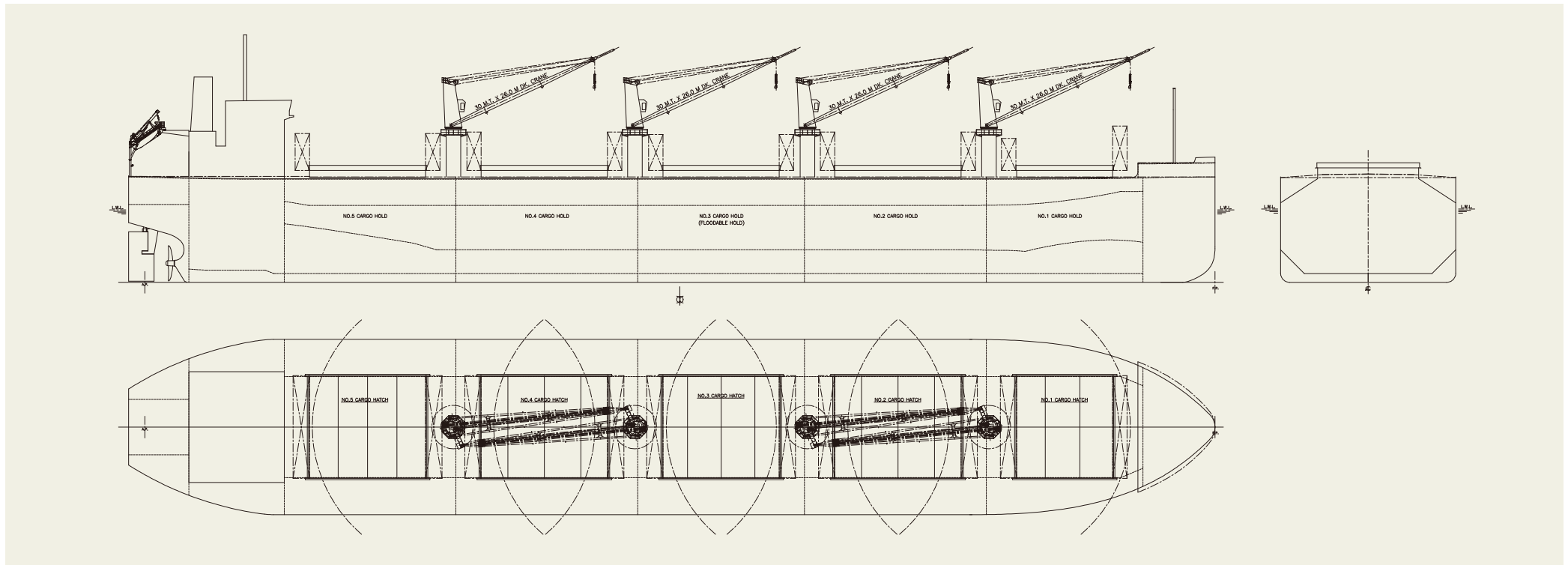
Length (o.a.).....	199.95 m
Breadth (mld.).....	32.26 m
Depth (mld.).....	19.28 m
Draft (mld.).....	13.518 m
Gross tonnage.....	36,068
Deadweight.....	64,678 MT

Main engine.....	MITSUI-MAN B&W 6S50ME-C9.7-EGRBP
MCR (kw x rpm).....	7,080 kW x 91.0 rpm
Speed (service).....	14.50 knots
Complement.....	25
Classification.....	ABS
Loading capacity (grain).....	81,215 m ³
Builder.....	Oshima Shipbuilding Co., Ltd.

sion efficiency are installed.

4. Special bow form, Seaworthy Bow improves speed performance in rough sea conditions as compared to

ordinary bows.



FEDERAL THUNDER BAY 34,763 DWT Bulk Carrier 63



Contents



By Builder



By Ship Type





Contents



By Builder



By Ship Type

FEDERAL THUNDER BAY 34,763 DWT Bulk Carrier 63

Oshima Shipbuilding Co., Ltd. delivered FEDERAL THUNDER BAY, a 34,763-DWT bulk carrier, to FEDERAL TRIDENT LTD., in October 2023.

Features

1. The vessel is an ICE – 1C class Laker
2. This vessel has been designed with a large deadweight and shallow draft
3. For unitized cargo and easy cargo handling, this vessel has box shaped cargo hold.
4. Four sets of high performance jib cranes (35MT) are installed for efficient cargo handling.

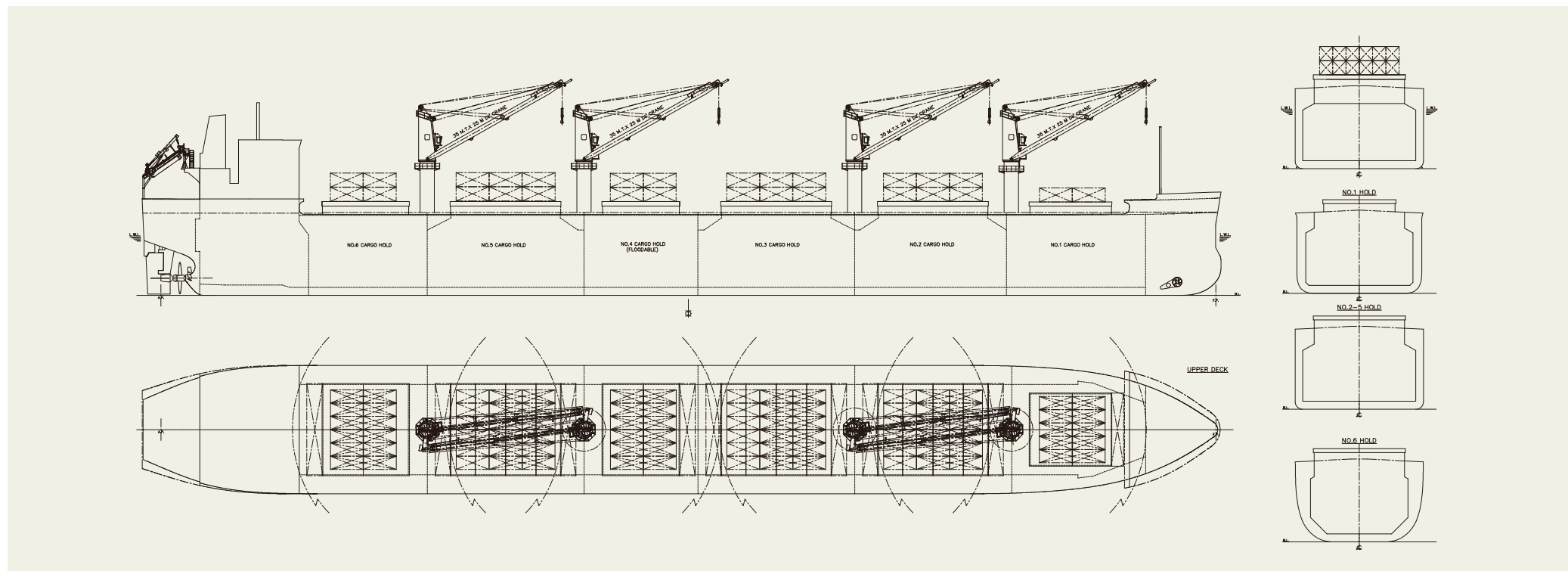
PRINCIPAL PARTICULARS

Length (o.a.).....	199.98 m
Breadth (mld.).....	23.762 m
Depth (mld.).....	14.85 m
Draft (mld.).....	10.861 m
Gross tonnage.....	21,043
Deadweight.....	34,763 MT

Main engine.....	MITSUI-MAN B&W 5S50ME-C9.7-HPSCR
MCR (kw x rpm).....	6,050 kW x 97.0 rpm
Speed (service).....	14.15 knots
Complement.....	25
Classification.....	DNV
Loading capacity (grain).....	41,607 m ³
Builder.....	Oshima Shipbuilding Co., Ltd.

5. Bow thruster and High-lift rudder of mariner type (with top plate fin and bottom fin) are adopted to get improved maneuverability in harbor.

6. Special bow form Seaworthy Bow improves speed performance in rough sea conditions compared ordinary bows.



NEW MAXIMUM 42,650 DWT Bulk Carrier 64



Contents



By Builder



By Ship Type





Contents



By Builder



By Ship Type

NEW MAXIMUM 42,650 DWT Bulk Carrier 64

Oshima Shipbuilding Co., Ltd. delivered NEW MAXIMUM, a 42,650-DWT bulk carrier, to NEW MAXIMUM SHIPPING CO., LTD. in January 2024.

Features

1. This vessel has an optimized hull form for carrying a variety of cargoes, such as grain, ore, coal, cement, hot coil, nickel ore and dangerous cargoes and large deadweight(42,650MT) with shallow draft (10.51m)
2. This vessel has a lot of cargo to be targeted and accommodates various loading patterns.
3. Wide opening folding type hatch cover and four sets of high performance Jib cranes (30MT) are installed for efficient

PRINCIPAL PARTICULARS

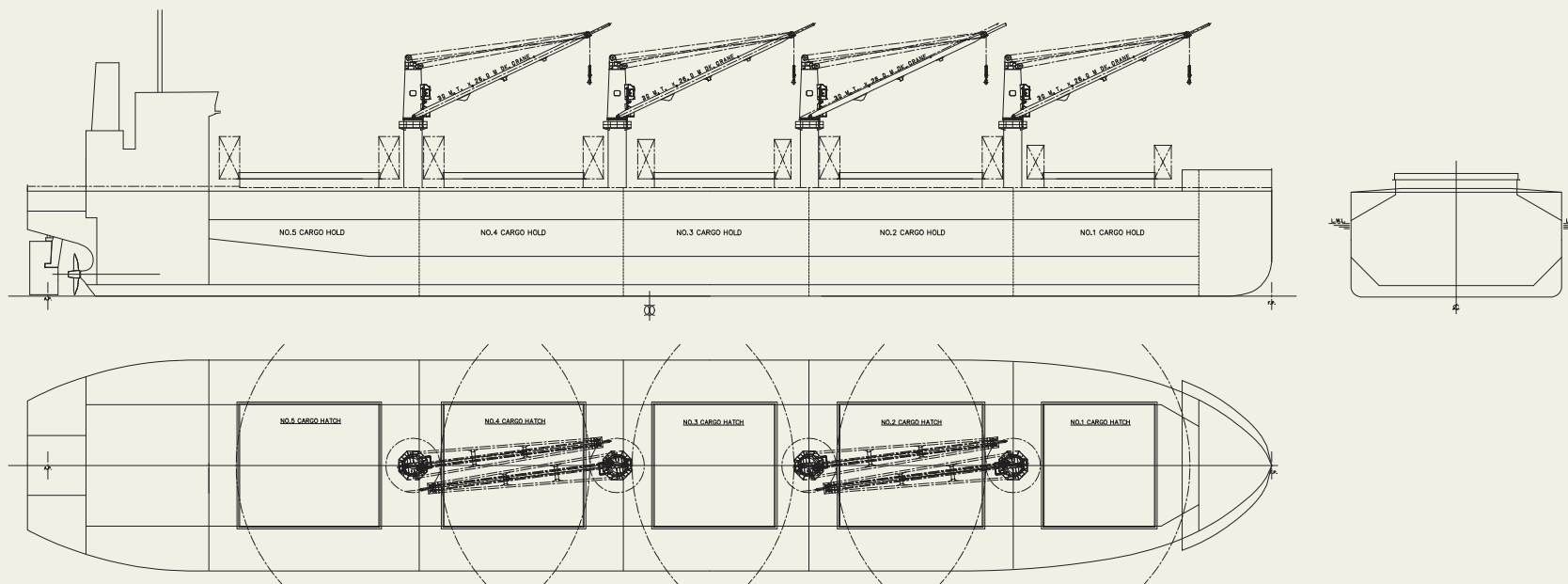
Length (o.a.).....	182.998 m
Breadth (mld.).....	32.26 m
Depth (mld.).....	15.00 m
Draft (mld.).....	10.51 m
Gross tonnage.....	25,852
Deadweight.....	42,650 MT

Main engine.....	MITSUI MAN B&W 5S50ME-C9.7-EGRBP
MCR (kw x rpm).....	5,720 kW x 100.0 rpm
Speed (service).....	14.00 knots
Complement.....	24
Classification.....	NK
Loading capacity (grain).....	55,130 m ³
Builder.....	Oshima Shipbuilding Co., Ltd.

cargo handling.

4. Advanced Flipper Fins & Rudder Fin which improve propulsion efficiency are installed.
5. Special bow form, Seaworthy Bow improves speed

performance in rough sea conditions as compared to ordinary bows.



SPRING AURA 58,481 DWT Bulk Carrier 65



Contents



By Builder



By Ship Type





Contents



By Builder



By Ship Type

SPRING AURA 58,481 DWT Bulk Carrier 65

Oshima Shipbuilding Co., Ltd. delivered SPRING AURA, a 58,481-DWT bulk carrier, to PRIMAVERA MONTANA S.A. in June 2024.

Features

1. This vessel has an optimized hull form for carrying grain, ore, coal, hot coil and dangerous cargoes, and large deadweight (58,481 MT) with shallow draft (13.048 m).
2. Due to wide opening folding type hatch cover and without top side tank, it is possible to prevent the cargo from being damaged due to handling by loading directly with crane.
3. Advanced Flipper Fins & Rudder Fin which improve

PRINCIPAL PARTICULARS

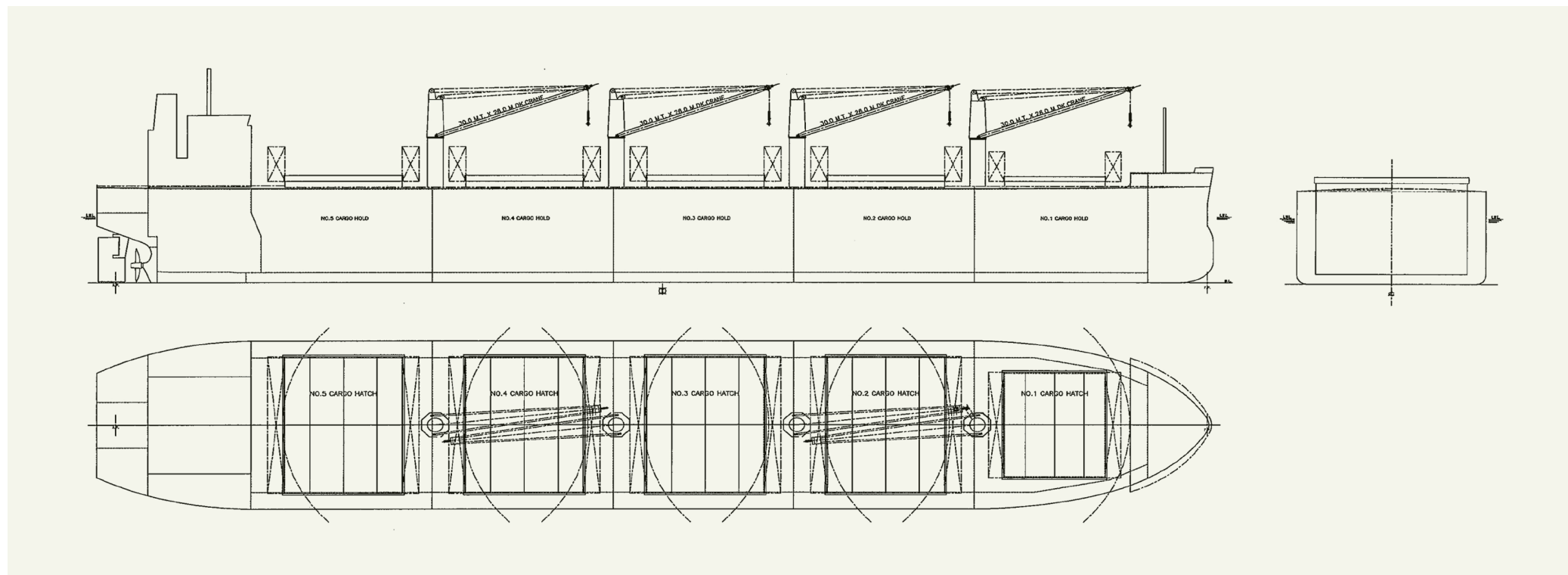
Length (o.a.).....	189.99 m
Breadth (mld.).....	32.26 m
Depth (mld.).....	18.54 m
Draft (mld.).....	13.048 m
Gross tonnage.....	33,075
Deadweight.....	58,481 MT

Main engine.....	MITSUI-MAN B&W 6S50ME-C9.7-EGRBP
MCR (kw x rpm).....	6,560 kW x 95.0 rpm
Speed (service).....	14.30 knots
Complement.....	25
Classification.....	NK
Loading capacity (grain).....	66,937 m ³
Builder.....	Oshima Shipbuilding Co., Ltd.

propulsion efficiency are installed.

4. Special bow form, Seaworthy Bow improves speed performance in rough sea conditions as compared to

ordinary bows.



NEW ACACIA

39,415 MT Bulk Carrier 66



Contents



By Builder



By Ship Type



NEW ACACIA 39,415 MT Bulk Carrier 66

Oshima Shipbuilding Co., Ltd. delivered NEW ACACIA, a 39,415-DWT bulk carrier, to NEW ACACIA MARINE CO. in July 2024.

Features

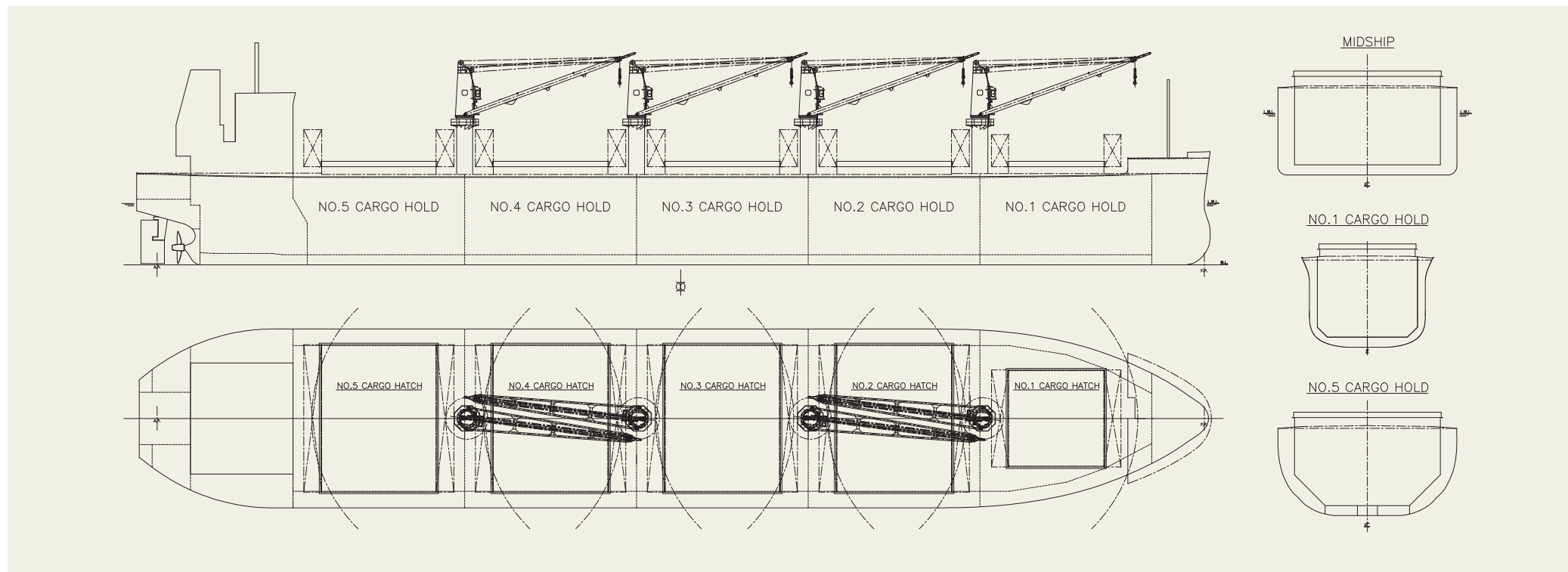
1. For unitized cargo and easy cargo handling, this vessel has box shaped cargo holds.
2. Due to wide opening folding type hatch cover and without top side tank, it is possible to prevent the cargo from being damaged due to handling by loading directly with crane.
3. Wide hatch cover improves cargo handling efficiency.
4. Advanced Flipper Fins & Rudder Fin which improve

PRINCIPAL PARTICULARS

Length (o.a.).....	179.99 m
Breadth (mld.).....	30.00 m
Depth (mld.).....	15.33 m
Draft (mld.).....	10.826 m
Gross tonnage.....	23,774
Deadweight.....	39,415 MT

Main engine.....	J-ENG 6UEC42LSH-Eco-D4-EGR
MCR (kw x rpm).....	5,030 kW x 104.0 rpm
Speed (service).....	14.00 knots
Complement.....	25
Classification.....	ABS
Loading capacity (grain).....	48,991 m ³
Builder.....	Oshima Shipbuilding Co., Ltd.

5. Special bow form, Seaworthy Bow improves speed performance in rough sea conditions as compared to ordinary bows.
6. Dangerous cargoes also can be loaded in cargo hold.



MIMOSA 42,374 DWT Bulk Carrier 67



Contents



By Builder



By Ship Type





Contents



By Builder



By Ship Type

MIMOSA 42,374 DWT Bulk Carrier 67

Oshima Shipbuilding Co., Ltd. delivered MIMOSA, a 42,374-DWT bulk carrier, to MIMOSA LINE S.A. in November 2024.

Features

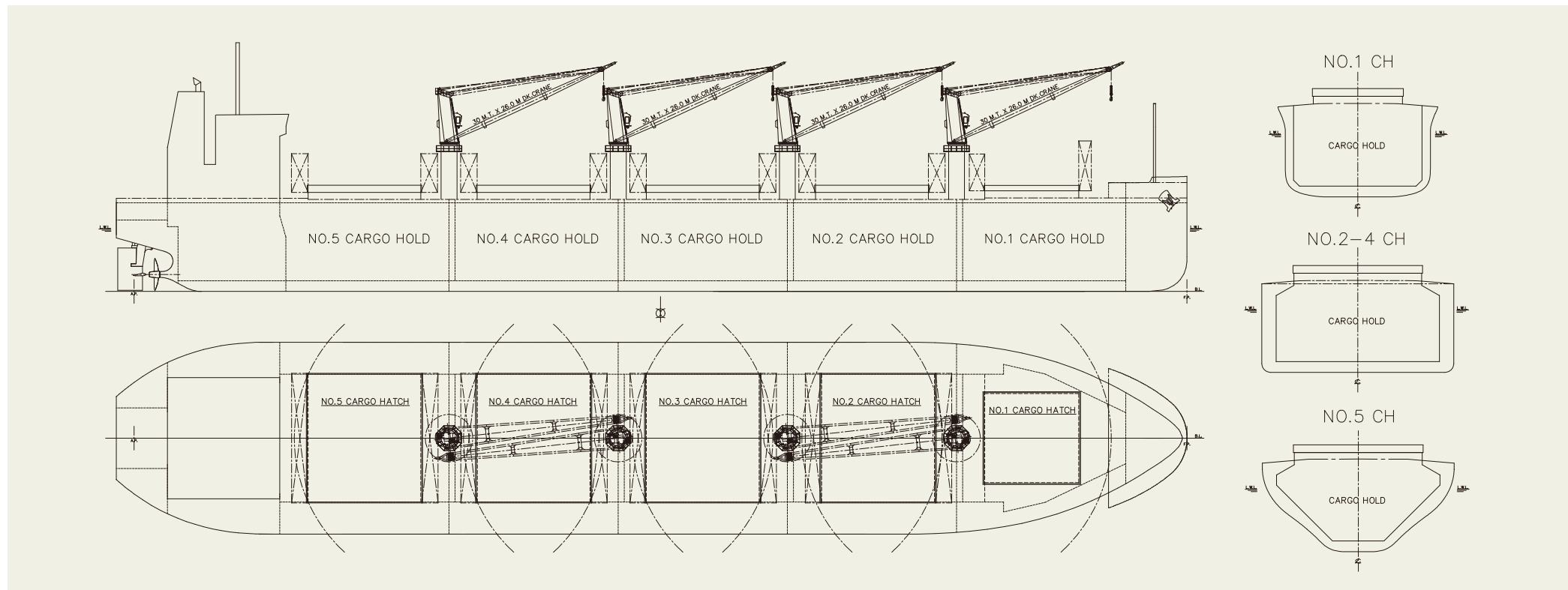
1. This vessel has an optimized hull form for carrying grain, ore, coal, hot coil and wood pellet, and large deadweight (42,374 MT) with shallow draft (10.708 m).
2. Wide hatch cover improves cargo handling efficiency.
3. Advanced Flipper Fins & Rudder Fin which improve propulsion efficiency are installed.
4. Special bow form, Seaworthy Bow improves speed

PRINCIPAL PARTICULARS

Length (o.a.).....	179.98 m
Breadth (mld.).....	32.26 m
Depth (mld.).....	15.20 m
Draft (mld.).....	10.708 m
Gross tonnage.....	25,609
Deadweight.....	42,374 MT

Main engine.....	J-ENG 6UEC42LSH-Eco-D3-EGR
MCR (kw x rpm).....	5,500 kW x 102.0 rpm
Speed (service).....	14.00 knots
Complement.....	25
Classification.....	NK
Loading capacity (grain).....	50,662 m ³
Builder.....	Oshima Shipbuilding Co., Ltd.

performance in rough sea conditions as compared to ordinary bows.



KEN OH 41,535 DWT Bulk Carrier 68



Contents



By Builder



By Ship Type



KEN OH 41,535 DWT Bulk Carrier 68

Oshima Shipbuilding Co., Ltd. delivered KEN OH, a 41,535-DWT bulk carrier, to DELICA SHIPPING S.A. in January 2025.

Features

1. This vessel has an optimized hull form for carrying grain, ore, coal, hot coil, cement, packaged lumber and log, and large deadweight (41,535 MT) with shallow draft (10.708 m).
2. Wide hatch cover improves cargo handling efficiency.
3. Advanced Flipper Fins & Rudder Fin which improve propulsion efficiency are installed.
4. Special bow form, Seaworthy Bow improves speed performance in rough sea conditions as compared to

PRINCIPAL PARTICULARS

Length (o.a.).....	179.98 m
Breadth (mld.).....	32.26 m
Depth (mld.).....	15.20 m
Draft (mld.).....	10.708 m
Gross tonnage.....	26,014
Deadweight.....	41,535 MT

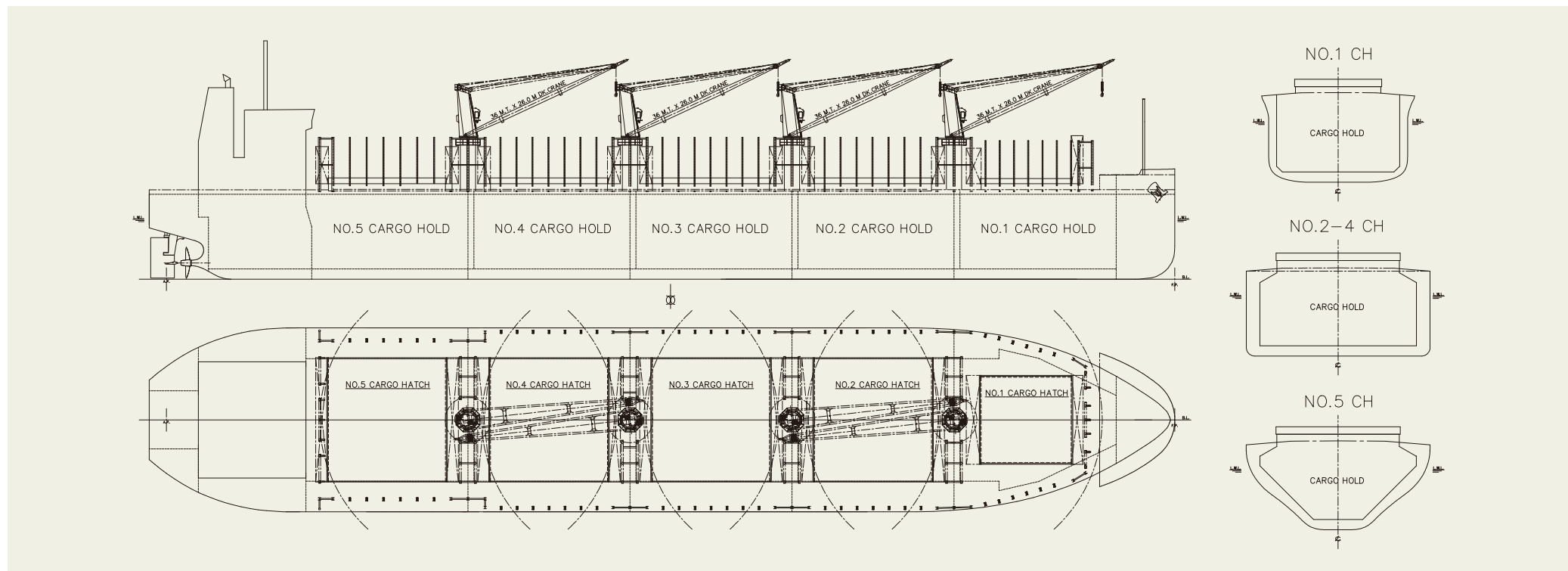
Main engine.....	J-ENG 6UEC42LSH-Eco-D3-EGR
MCR (kw x rpm).....	5,500 kW x 102.0 rpm
Speed (service).....	14.00 knots
Complement.....	25
Classification.....	NK
Loading capacity (grain).....	50,670 m ³
Builder.....	Oshima Shipbuilding Co., Ltd.

ordinary bows.

5. The vessel to be able to carry log and packaged lumber in cargo holds, on upper deck in way of cargo hold part and on

hatch covers.

6. Dangerous cargoes also can be loaded in cargo hold.
7. SOx scrubber is installed for environmental friendliness



VOLARE 42,306 DWT Bulk Carrier 69



Contents



By Builder



By Ship Type





Contents



By Builder



By Ship Type

VOLARE 42,306 DWT Bulk Carrier 69

Oshima Shipbuilding Co., Ltd. delivered VOLARE, a 42,306-DWT bulk carrier, to HAWK MARINE CORPORATION S.A. in May 2025.

Features

1. This vessel has an optimized hull form for carrying grain, ore, coal and hot coil and large deadweight (42,306 MT) with shallow draft (10.708 m).
2. Wide hatch cover improves cargo handling efficiency.
3. Advanced Flipper Fins & Rudder Fin which improve propulsion efficiency are installed.
4. Special bow form, Seaworthy Bow improves speed performance in rough sea conditions as compared to ordinary bows.
5. Dangerous cargoes also can be loaded in cargo hold.

PRINCIPAL PARTICULARS

Length (o.a.).....	179.98 m	Main engine.....	J-ENG 6UEC42LSH-Eco-D3-EGR
Breadth (mld.).....	32.26 m	MCR (kw x rpm).....	5,500 kW x 102.0 rpm
Depth (mld.).....	15.20 m	Speed (service).....	14.00 knots
Draft (mld.).....	10.708 m	Complement.....	25
Gross tonnage.....	25,617	Classification.....	NK
Deadweight.....	42,306 MT	Loading capacity (grain).....	50,688 m ³
		Builder.....	Oshima Shipbuilding Co., Ltd.

